

**Oracle 1z0-554**

**Oracle Application Development Framework  
Essentials**

---

**QUESTION NO: 1**

You select a binding in the page definition file and set the `ChangeEventPolicy` property to `ppr`.

What effect does this action have on the way the page is rendered?

- A.** It allows a component to partially refresh another component whose `partialSubmit` property is set to `true`.
- B.** When a user selects a new value in a field, the portion of the page where that component resides is redrawn.
- C.** It enables you to add a component as a partial target for an event, so that when that event is triggered, the partial target component is refreshed.
- D.** Components whose values change as a result of back-end logic are automatically repainted.

**Answer: A**

Reference: <http://orafaq.com/aggregator/sources/167>

**QUESTION NO: 2**

For a Customers view object, you have defined a view criteria to show only U.S. customers. On an ADF Faces page, you already have an ADF Faces table displaying data from the Customers view object. How would you display a query panel on the page that will allow you to select the view criteria and filter the existing Customers table on the page?

- A.** Drag the view criteria as a query panel.
- B.** Drag the view criteria to the existing table and select query panel with table.
- C.** Drag the view criteria as a query panel, and then set the `ID` property of the query panel to reference the table.
- D.** Drag the view criteria as a query panel, and then set the `ResultComponent ID` property of the query component to reference the table.
- E.** Drag the view criteria as a query panel, and then set the `Model` property of the query component to reference the table binding.
- F.** Drag the view criteria as a query panel, and then set the `value` property of the query component to reference the table binding.

**Answer: D**

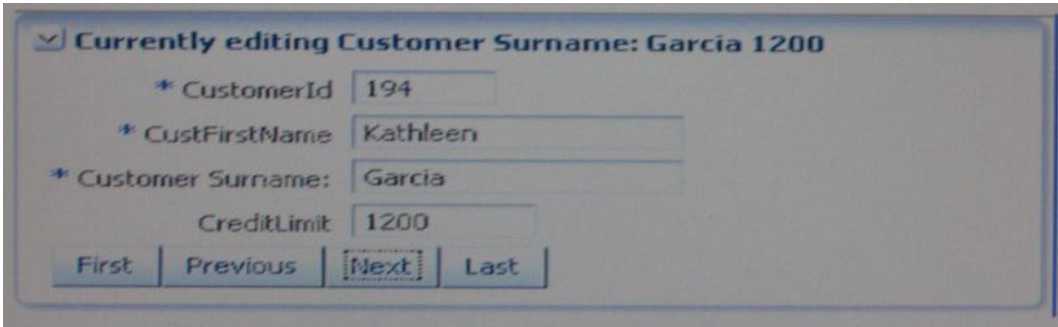
Reference:

[http://docs.oracle.com/cd/E12839\\_01/web.11111/b31974/web\\_search\\_bc.htm#CIHIJFCH](http://docs.oracle.com/cd/E12839_01/web.11111/b31974/web_search_bc.htm#CIHIJFCH)

---

### QUESTION NO: 3

You want to define that a panel box titled should display information about the currently selected customer: "currently editing Customer Surname: <Customer's Last Name> < Credit limit>". If the credit limit is null, then a zero should be displayed. Furthermore, in case the label for the surname field changes, this string should reference the ADF Business Components control hints for the label.



- A.** Currently editing Customer Surname: # { bindings. CustLastName. Input Value} # {bindings. CreditLimit. inputValue}
- B.** Currently editing # {bindings. CustName. Hints. label}: # {bindings. CustLastName. InputValue} # {empty bindings. CreditLimit. inputValue ? 0 : bindings. CreditLimit.InputValue}
- C.** Currently editing # {bindings. CustName. Hints. label}: # {bindings. CustLastName. InputValue} # {Null bindings. CreditLimit. inputValue ? 0 :
- D.** Currently editing # {bindings. CustName. Hints. label}: # bindings. CustLastName. InputValue} # {if empty bindings. CreditLimit. inputValue then 0 else bindings. CreditLimit. INputValue}

#### Answer: A

Reference: <http://www.scribd.com/doc/53251031/Quick-Start-Guide-to-Oracle-Fusion-Development-Oracle-JDeveloper-and-Oracle-ADF>

### QUESTION NO: 4

You have found a declarative component that you would like to use on one of the pages that you are designing.

Choose the correct sequence of steps to add the component to the page.

- A.** Select the ADF library from the Component Palette.  
Add the ADF library to the current project.

---

Select the declarative component and drag it to the page.  
Deploy the component's project as an ADF library JAR file.  
**B.** Deploy the component's project as an ADF library JAR file.  
Add the ADF library to the current project.  
Select the ADF library from the Component Palette.  
Select the declarative component and drag it to the page.  
**C.** Add the ADF library to the current project.  
Select the ADF library from the Component Palette.  
Select the declarative component and drag it to the page.  
Deploy the component's project as an ADF library JAR file.  
**D.** Deploy the component's project as an ADF library JAR file.  
Select the ADF library from the Component Palette.  
Select the declarative component and drag it to the page.  
Add the ADF library to the current project.  
**E.** Deploy the component's project as an ADF library JAR file.  
Select the ADF library from the Component Palette.  
Add the ADF library to the current project.  
Select the declarative component and drag it to the page.

**Answer: A**

Reference: [http://docs.oracle.com/cd/E12839\\_01/web.1111/b31973/gs\\_jdev.htm#CCHIGCFI](http://docs.oracle.com/cd/E12839_01/web.1111/b31973/gs_jdev.htm#CCHIGCFI)  
(topic 2.4.4)

**QUESTION NO: 5**

An application module is named MyAppModule. No Java component is defined for the module but the application does define a base class that extends `racle.jbo.serverAppiicationModuleimp1`.

Which two statements are true in this scenario?

- A.** Code in the base class will only be implemented if `MyAppModuleApp1.java` extends the base class.
- B.** Any code in the base class will be implemented by `MyAppModule`.
- C.** No code in the base class will be implemented because an application-specific Java component named `MyAppModuleImp1.java` does not exist.
- D.** Any code in the base class will be implemented by `MyAppModuleDefimp1.java`.
- E.** The `MyAppModule.xml` definition will include a reference to the base class.

**Answer: B**

Reference: [http://docs.oracle.com/cd/E12839\\_01/web.1111/b31974/bcadvgen.htm#BABCGFIE](http://docs.oracle.com/cd/E12839_01/web.1111/b31974/bcadvgen.htm#BABCGFIE)  
(topic 36.1.3)

---

**QUESTION NO: 6**

In which two places do you configure managed beans?

- A. In the page definition file
- B. In the faces-config.xml file
- C. In the adfc-config.xml file
- D. In the Property Inspector
- E. In the task flow definition files

**Answer: B,C**

Reference: [http://docs.oracle.com/cd/E12839\\_01/web.1111/b31973/gs\\_jdev.htm#CCHIAHAD](http://docs.oracle.com/cd/E12839_01/web.1111/b31973/gs_jdev.htm#CCHIAHAD)  
(topic 2.6.1)

**QUESTION NO: 7**

You are debugging an application module method that seems to be causing an error when the argument value is anything but "2". How could you most efficiently debug this issue?

- A. Set a breakpoint on the first line of the method implementation and set the breakpoint property to break only for threads named oracie.jbo.Exception.
- B. Set a breakpoint on the first line of the method implementation and set the breakpoint pass count property to 2.
- C. Set a breakpoint on the first line of the method implementation and set the breakpoint condition to `arg != 2`.
- D. Set a breakpoint on the method declaration (where the argument is defined) and step through the breakpoint at execution to determine the argument value.
- E. Set a breakpoint on the method declaration (where the argument is defined) and set the condition to `arg == 2`.

**Answer: A**

**Explanation:**

**QUESTION NO: 8**

Your application contains an entity object, OrdersEO. You decide to create an updatable view object SpecialOrdersVO, to handle orders that contain not-from-stock items.

---

How will SpecialOrdersVO and OrdersEO interact to retrieve data about special orders?

- A.** OrdersEO retrieves the data from the database and validates it; SpecialOrdersVO then queries the entity object's cache
- B.** SpecialOrdersVO queries the database; the retrieved data is validated in the entity object, and then saved to the entity object's cache
- C.** SpecialOrdersVO queries the OrdersEO entity object to retrieve data about special orders; the data is then saved in the view object's cache
- D.** SpecialOrdersVO queries the OrdersEO cache; the data is validated by the entity object, and then the two objects are synchronized with the database

**Answer: B**

**Explanation:**

### **QUESTION NO: 9**

Identify two advantages that ADF Model offers the developer.

- A.** It insulates the developer from needing to know about the specifics of the underlying business services implementation.
- B.** It enables the developer to abstract application navigation from the physical pages.
- C.** It saves time In that it allows the developer to quickly build business services from database tables.
- D.** It enables the developer to bind UI components directly to tables and columns in the database.
- E.** It provides the developer with a generalized approach to binding services and UI components.

**Answer: A,E**

Reference: <http://www.oracle.com/technetwork/developer-tools/adf/adf-11-overview-1-129504.pdf>  
(page 7 and 8)

### **QUESTION NO: 10**

You have an ADF Faces page which includes input components for A, B and C. On updating either A or B, you want C to be refreshed automatically. How could you achieve this?

- A.** Set the PartialTriggers property on A and B to reference
- B.** Set the PartialTriggers property on C to reference A and B
- C.** Set the Autosubmit property on A and B to true
- D.** Set the Autosubmit property on A and B to true, and the PartialTriggers property on C to



---

reference A and B

**E.** Set the Autosubmit property on A and B to true and the PartialTriggers property on C to reference C

**F.** Set the Autosubmit property to true on A, B and C

**Answer: D**

Reference: <http://marianne-horsch-adf.blogspot.com/2011/03/how-to-convert-input-to-uppercase.html>

### QUESTION NO: 11

You have a single page containing bindings you want to secure in an application. What is the recommended way to secure the data on that specific page?

**A.** Create a bounded task flow, add the page, and secure the bounded task flow.

**B.** Create an unbounded task flow, add the page, and secure the bounded task flow.

**C.** Secure the page definition file.

**D.** Secure the JSF file.

**E.** Secure all the entity objects used on the page.

**Answer: A**

Reference: [http://docs.oracle.com/cd/E12839\\_01/web.1111/b31974/taskflows.htm](http://docs.oracle.com/cd/E12839_01/web.1111/b31974/taskflows.htm)

### QUESTION NO: 12

What file would you use if you wanted to modify the Authentication Security of an application?

**A.** adfc-config.xml

**B.** faces-config.xml

**C.** jazn-data.xml

**D.** web.xml

**E.** weblogic.xml

**Answer: D,E**

Reference: <http://blog.whitehorses.nl/2010/02/01/weblogic-web-application-container-security-part-2-adf-security/> (search for web.xml)

Explanation: There are two logical answers to this question. Kindly take note.

---

**QUESTION NO: 13**

Choose two ways you could employ a bounded task flow as a region.

- A.** Drag a bounded task flow definition from the Application Navigator to the page definition on unbounded task flow.
- B.** Drag a bounded task flow definition from the Application Navigator to the page and choose Create Region.
- C.** Drag a bounded task flow definition from the Application Navigator to the page and choose Create Dynamic Region.
- D.** Drag a bounded task flow definition from the data control palette to the page and choose Create Region.
- E.** Drag a region from the Application Navigator to the page and choose Create Dynamic Region.
- F.** Drag a bounded task flow definition from the Application Navigator to the page definition on a bounded task flow.

**Answer: B,C**

Reference: [http://docs.oracle.com/cd/E12839\\_01/web.1111/b31974/taskflows\\_regions.htm](http://docs.oracle.com/cd/E12839_01/web.1111/b31974/taskflows_regions.htm) (topic 17.1.1)

**QUESTION NO: 14**

Where do you register the resource bundles for an application?

- A.** in the adfc-config.xml file for the application
- B.** in the Resource Palette
- C.** in the ViewController project for the application
- D.** in the faces-config.xml file for the application
- E.** in the Resource Catalog

**Answer: D**

Reference: [http://docs.oracle.com/cd/E12839\\_01/web.1111/b31973/af\\_global.htm#BJEBIGCF](http://docs.oracle.com/cd/E12839_01/web.1111/b31973/af_global.htm#BJEBIGCF) (topic 21.1)

**QUESTION NO: 15**

What type of event listener can be triggered at different points In the JSF life cycle?



- 
- A. Action listener
  - B. Selection listener
  - C. Launch listener
  - D. Phase listener
  - E. Value change listener

**Answer: D**

Reference: <http://www.laliluna.de/articles/posts/jsf-2-evaluation-test.html>

### QUESTION NO: 16

You have created a page template to use as the basis for the Web pages in your application however you have a handful of pages that require a slightly different layout from that of the template.

What is the most efficient use of the framework to handle this situation?

- A. Create two page templates; one for the majority of pages (those that use the standard layout), and one for the pages that require the different layout.
- B. Create one template for the standard layout, and create individual page layouts for the few pages that differ from the standard.
- C. Create one template for all pages and incorporate a backing bean to handle the small differences on the other pages.
- D. Create one template for all pages and define template attributes to customize the template for those pages that are different.

**Answer: D**

Reference: [http://docs.oracle.com/cd/E12839\\_01/web.1111/b31973/af\\_reuse.htm#CACCFJC](http://docs.oracle.com/cd/E12839_01/web.1111/b31973/af_reuse.htm#CACCFJC)

### QUESTION NO: 17

In an HR replication you want to add validation using Groovy language. The validation is defined on the salary attribute. It needs to ensure that if an employee's job is not that of a salesman's then the new value of the salary must be greater than 500 or greater than zero. What is the Groovy expression you use?

- A. ( Job "SALESMAN" ? newValue > 500 : newValue > 0)
- B. (job != "SALESMAN" ? currentValue > 500 : currentValue > 0)
- C. (job != "SALESMAN" : newValue > 500 ? newValue > 0)
- D. (job != 'SALESMAN' ? newValue > 500 : newValue > 0)

---

E. (job != "SALESMAN" ? newValue > 500 : newValue > 0)

**Answer: E**

Reference: <http://www.oracle.com/technetwork/developer-tools/jdev/introduction-to-groovy-128837.pdf> (page 12)

### QUESTION NO: 18

There is a specific order in which events and listeners fire. Choose the correct sequence from those listed below.

**A.** 1. Value change listeners

2. Validators

3. Action listeners

4. Action methods

**B.** 1. Action listeners

2. Action methods

3. Validators

4. Value change listeners

**C.** 1. Action methods

2. Action listeners

3. Value change listeners

4. Validators

**D.** 1. Validators

2. Value change listeners

3. Action listeners

4. Action methods

**E.** 1. Value change listeners

2. Action listeners

3. Validators

4. Action methods

**Answer: D**

Reference: <http://www.scribd.com/doc/6031025/14Handling-Application-Events> (page 14-12)

### QUESTION NO: 19

A view link defines a basic master-detail relationship between two view object. Which three detail hierarchies can you achieve by creating more view links?

- 
- A. multilevel master-detail-detail
  - B. multilevel detail-master-master
  - C. detail with multiple masters
  - D. master with multiple (peer) details

**Answer: A,C,D**

Reference: [http://docs.oracle.com/cd/E12839\\_01/web.1111/b31974/bcquerying.htm#CEGJCAHC](http://docs.oracle.com/cd/E12839_01/web.1111/b31974/bcquerying.htm#CEGJCAHC)  
(note, topic 5.6.3)

### QUESTION NO: 20

Identify the business component that is being described below.

“It is a smart data service containing a data model of master-detail queries that your client interface needs to work with. It also provides a transaction and database connection used by the components it contains.”

- A. a service method
- B. a transaction
- C. an application module
- D. a view object
- E. a task flow
- F. a data control

**Answer: C**

Reference: [http://docs.oracle.com/cd/E12839\\_01/web.1111/b31974/bcintro.htm](http://docs.oracle.com/cd/E12839_01/web.1111/b31974/bcintro.htm) (topic 3.2.1.1)

### QUESTION NO: 21

Which File includes all the methods to insert, update, delete, and lock rows?

- A. Entity. Java
- B. EntityImp1. Java
- C. EntityDefImp1.Java
- D. EntityCollImp1. Java

**Answer: B**

Reference: [http://docs.oracle.com/cd/E12839\\_01/web.1111/b31974/bcintro.htm](http://docs.oracle.com/cd/E12839_01/web.1111/b31974/bcintro.htm) (topic 3.2.4.2)

---

**QUESTION NO: 22**

Valid order status codes for an application are contained in the StatusCode attribute of an OrderStatusCodes view object. In the orders view object, the OrderStatusCode attribute should be selected from a drop-down list. How does ADF Business Component refer to the OrderStatusCodes view OrderStatusCode attribute?

- A.** It uses a view accessor in the Orders view object to refer to the OrderStatusCode view object.
- B.** It uses a view link between the Orders .OrderStatusCode and OrderStatusCodes.StatusCode attributes.
- C.** It uses a where clause in the Orders view object and includes:  
WHERE Orders . OrderStatusCode = OrderStatusCodes. StatusCode
- D.** It uses a where clause In the Orders view object and includes:  
WHERE Orders. OrderStatusCode=OrderStatusCodes. Id
- E.** It uses a joined view object to include both the Orders and OrderStatusCodes entity objects.

**Answer: A**

Reference: <http://www.oracle.com/technetwork/developer-tools/jdev/ccset23-all-100068.html>

**QUESTION NO: 23**

Which three statements are correct about task flow control flows?

- A.** A control flow would typically be initiated from a button or link that is being clicked
- B.** A view activity can be the source for many control flow rules.
- C.** A control flow can exist between a view activity and a method call.
- D.** The definition of control flows for a page is stored in the page backing bean.
- E.** The name of a control flow must match the name of the view activity to which it navigates

**Answer: A,C,E**

**Explanation:**

**QUESTION NO: 24**

Identify two advantages of adding a service method to an application module.

- A.** It can be implemented in the application module's Def class allowing greater flexibility.
- B.** It is useful for performing operations across view objects.

- C. Its code can be dependent only on a specific view.
- D. It can be called by the client, requiring very little data manipulation.
- E. It does not require publishing to allow a client to access the methods.

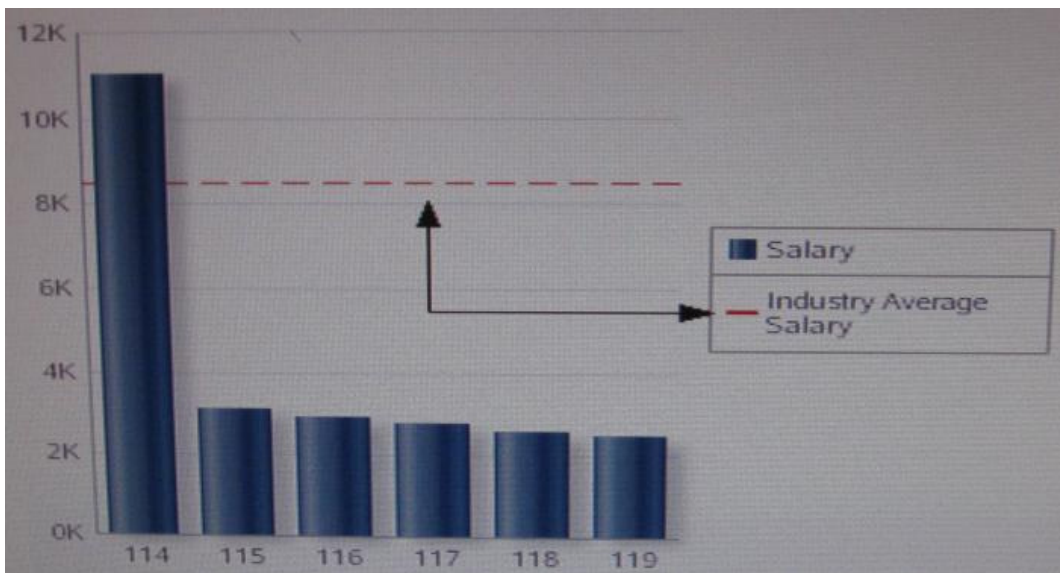
**Answer: B,D**

Reference:

[http://download.oracle.com/docs/cd/E12839\\_01/web.11111/b31974/bcservices.htm#sm0206](http://download.oracle.com/docs/cd/E12839_01/web.11111/b31974/bcservices.htm#sm0206)

### QUESTION NO: 25

Which component is providing the following functionality on this graph?



- A. dvt: referenceobject
- B. dvt: series
- C. dvt: seriesSet
- D. dvt: annotation
- E. dvt: y1Axis

**Answer: A**

Reference:

[http://download.oracle.com/docs/cd/E12839\\_01/apirefs.11111/e12418/tagdoc/dvt\\_referenceObject.html](http://download.oracle.com/docs/cd/E12839_01/apirefs.11111/e12418/tagdoc/dvt_referenceObject.html)

### QUESTION NO: 26

---

Which type of object is being described here?

“They handle events or some manipulation of data that is best handled at the front end. They are bash ally java classes with a no arg constructor that you register with the application in task flow files.”

- A. Task flows
- B. Event listeners
- C. Action methods
- D. Managed beans
- E. Contextual events
- F. Backing beans

**Answer: D**

Reference: [http://docs.oracle.com/cd/E12839\\_01/web.1111/b31973/gs\\_jdev.htm](http://docs.oracle.com/cd/E12839_01/web.1111/b31973/gs_jdev.htm) (topic 2.6, second paragraph)

#### QUESTION NO: 27

Choose two advantages of writing code in the application module that sets up or manipulates the data model?

- A. It configures entity object properties to query the correct data to display.
- B. <![if !ppt]-> <!-- [e,,dif]-> You make the Intent of your code more clear to clients.
- C. It does not require publishing to allow the client to access the methods.
- D. <![if !ppt]-> <!-- [e,,dif]-> you keep the option open to improve your implementation without affecting clients.
- E. It is implemented in the application module's Def class allowing greater flexibility.

**Answer: C,D**

**Explanation:**

#### QUESTION NO: 28

You are working on the design of Web pages for an application. One page requires that user can collapse or restore panels of data. When a panel collapsed the panel contents are hidden: when panel is restored, the contents are displayed.

Which two layout components would enable you to achieve this design?

- 
- A. af:panelSplitter
  - B. af:panelCollection
  - C. af:panelTabbed
  - D. af:decorativeBox
  - E. af:panelAccordion

**Answer: C,E**

Reference: [http://docs.oracle.com/cd/E12839\\_01/web.1111/b31973/af\\_orgpage.htm](http://docs.oracle.com/cd/E12839_01/web.1111/b31973/af_orgpage.htm) (table 8-1)

### QUESTION NO: 29

You want to convert a default set of business components for Departments into service interface.

Which two components would you use to do this?

- A. Application module, entity object
- B. Entity object, associations
- C. Entity object, view object
- D. Application module, view object
- E. View object, view links

**Answer: A**

Reference: [http://docs.oracle.com/cd/E12839\\_01/web.1111/b31974/bcextservices.htm](http://docs.oracle.com/cd/E12839_01/web.1111/b31974/bcextservices.htm) (topic 11.3; second paragraph)

### QUESTION NO: 30

You have default Department and Employee Business Components and want to show all the employees in a single Department. You create a default JSF Master-Detail page with the master as a form (Department) and the details as a table (Employees) page. It also contains navigation to move from department to another. What three binding types would you expect to find in the page definition file?

- A. attributeValue, action, table
- B. attributeValue, action, tree
- C. attributeValue, button, table
- D. attributeValue, button, tree
- E. attributeValue, action, list

---

F. attributeValue, button, list

**Answer: B**

Reference: [http://docs.oracle.com/cd/E12839\\_01/web.1111/b31974/appendixa.htm#CDJCBIGB](http://docs.oracle.com/cd/E12839_01/web.1111/b31974/appendixa.htm#CDJCBIGB)  
(table A-5)

### QUESTION NO: 31

Which component CANNOT be packaged into an ADF Library JAR file?

- A. ADF Business Components
- B. Task flows
- C. Task flow templates
- D. ADF Library JAR files
- E. Declarative components

**Answer: D**

Reference:

[http://docs.oracle.com/cd/E12839\\_01/web.1111/b31974/reusing\\_components.htm#BEIJIGDG](http://docs.oracle.com/cd/E12839_01/web.1111/b31974/reusing_components.htm#BEIJIGDG)  
(Table 32-1)

### QUESTION NO: 32

You have a page that shows order items, and the product ordered. When you add a product to the ordered item list, you select it from a category. You select a category and then select the product to order from the category. You can accomplish this task with a dependent list of values. In order to accomplish this task you need to create a view criteria on the product's view. Which attribute from the Product's view should you use in the view criteria?

- A. OrderItemId
- B. ProductId
- C. ProductName
- D. CategoryId
- E. CategoryName

**Answer: B**

**Explanation:**





---

**QUESTION NO: 33**

What type of event is triggered when a user selects a check box?

- A. A dialog event
- B. An action event
- C. A phase event
- D. A value change event
- E. A selection event

**Answer: D**

**Explanation:**

**QUESTION NO: 34**

Choose three characteristics of action listeners.

- A. They do not return a value.
- B. They are used for controlling the UI, modifying values, or navigation
- C. They are executed last in the execution order.
- D. They are triggered by a change in the value of a component.
- E. They execute in the Invoke Application phase of the life cycle.
- F. They return a String outcome.
- G. They execute after value change listeners.

**Answer: A,E,G**

Reference: [http://docs.oracle.com/cd/E12839\\_01/web.1111/b31973/af\\_lifecycle.htm](http://docs.oracle.com/cd/E12839_01/web.1111/b31973/af_lifecycle.htm) (Topic 4.3)

**QUESTION NO: 35**

Choose four benefits of using page templates.

- A. They increase developer productivity.
- B. You can base a new page template on an existing page template.
- C. They can be nested.
- D. They can be customized.
- E. They enable a consistent look and feel across the pages of an application.
- F. They are reusable.
- G. There are two reuse mechanisms: by copy and by reference

---

**Answer: A,B,D,E**

**Explanation:**

**QUESTION NO: 36**

In which file would you expect to find all the attribute accessor for a view object?

- A. View. Java
- B. ViewImpl.java
- C. ViewDefImpl.java
- D. ViewRowImpl.java

**Answer: B**

**Explanation:**

**QUESTION NO: 37**

When granting a user or role access to a group of pages, it is best practice to grant that access to what type of file or component?

- A. Page definition file
- B. Bounded task flow including the page(s)
- C. Unbounded task flow including the page(s)
- D. .jspx file
- E. Entity objects included in the UI

**Answer: A**

Reference:

[http://download.oracle.com/docs/cd/E12839\\_01/web.1111/b31974/adding\\_security.htm](http://download.oracle.com/docs/cd/E12839_01/web.1111/b31974/adding_security.htm) (Topic 29.1; bullet point 1)

**QUESTION NO: 38**

Which component stores application page changes in xml documents and merges the changes during the rendering of the page?

- A. WebCenter Framework



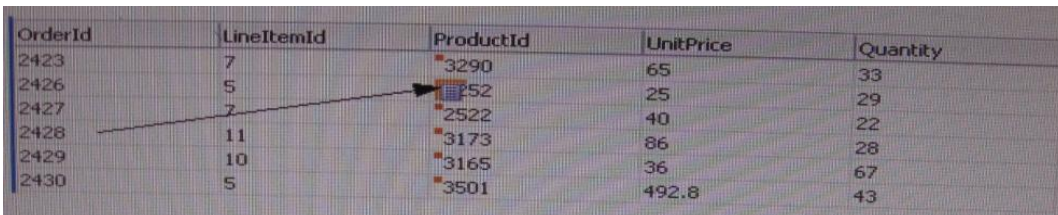
- B. WebCenter Services
- C. Metadata Services
- D. WebCenter Spaces
- E. Portals

**Answer: B**

Reference: [http://docs.oracle.com/cd/E12839\\_01/webcenter.11111/e10148/jpsdg\\_files.htm](http://docs.oracle.com/cd/E12839_01/webcenter.11111/e10148/jpsdg_files.htm)

**QUESTION NO: 39**

Identify the indicated component (orange triangle within ProductId field):



OrderId	LineItemId	ProductId	UnitPrice	Quantity
2423	7	3290	65	33
2426	5	3252	25	29
2427	7	2522	40	22
2428	11	3173	86	28
2429	10	3165	36	67
2430	5	3501	492.8	43

- A. af:contextInfo
- B. af : noteWindow
- C. af:showPopupBehavior
- D. af:outputFormatted
- E. af:message
- F. af: link

**Answer: B**

Reference: <http://www.scribd.com/doc/12939641/Oracle-Fusion-Middle-Ware-Web-User-Interface-Guide> (page 13-2)

**QUESTION NO: 40**

Which component stores application page changes in XML documents and merges the changes during the rendering of the page?

- A. WebCenter Framework
- B. WebCenter Services
- C. Metadata Services

- 
- D. WebCenter Spaces
  - E. Portals

**Answer: B**

**Explanation:**

**QUESTION NO: 41**

When granting a user or role access to a group of pages, it is best practice to grant that user or role access to what type of file or component?

- A. Page definition file
- B. Bounded task flow including the page(s)
- C. Unbounded task flow including the page(s)
- D. .jspx file
- E. Entity objects included in the UI

**Answer: A**

**Explanation:**

**QUESTION NO: 42**

What type of reusable component is being described here?

“They define reusable skeletons which are available to be extended, and therefore, cannot be run on their own. They can be based on another reusable component of the same type. The reuse mechanisms are provided: by copy and by reference”

- A. Application mechanisms
- B. Application modules
- C. Page templates
- D. Task flow templates
- E. Task flows
- F. Declarative components

**Answer: E**

**Explanation:**

Reference: <http://www.oracle.com/technetwork/developer-tools/adf/learnmore/oracle-adf-11g-primer-154277.pdf> (page 9)

---

**QUESTION NO: 43**

What type of object is being described here?

“It provides a way to co-ordinate regions on a page. It can be raised or consumed only with a method binding that must be only data control methods, not managed bean methods.”

- A. An action event
- B. A method call
- C. A task flow call
- D. A contextual event
- E. A router
- F. A data control

**Answer: D**

Reference: [http://docs.oracle.com/cd/E12839\\_01/web.1111/b31974/taskflows\\_complex.htm](http://docs.oracle.com/cd/E12839_01/web.1111/b31974/taskflows_complex.htm)

**QUESTION NO: 44**

What is the most likely cause of the run-time error, "Attempt to set a parameter name that does not occur in the SQL: employeeid"?

- A. The user has not supplied the value for the bind variable.
- B. The view object does not have a bind variable defined.
- C. The view object query does not have a reference to the bind variable.
- D. The employeeid attribute is not defined in the view object.
- E. The view object query does not have a WHERE clause defined.

**Answer: A**

Reference: <http://jianmingli.com/wp/?p=2369>

**QUESTION NO: 45**

You master (form)/detail (table) page displaying a single order and a table containing the order items on it. If contains navigation to move from one order to another order what three bindings types would you find in the page definition file?

- 
- A. attributeValue, action, table
  - B. attributeValue, action, tree
  - C. attributeValue, button, table
  - D. attributeValue, button, tree
  - E. attributeValue, action, list
  - F. attributeValue, button, list

**Answer: B**

**Explanation:**

#### **QUESTION NO: 46**

To skin a particular instance of a command link component you define a skin definition for the link. What attribute would you then set on the link button component to incorporate the skin definition?

- A. SkinFamily
- B. Contentstyle
- C. StyleClass
- D. InlineStyle
- E. SkinClass

**Answer: C**

**Explanation:**

#### **QUESTION NO: 47**

In a JSF view, the user completes a form and clicks a Submit button. The Submit button should call the commit operation on the application module, as well as the loginsert method defined in the -ationModuleimpl .Java. Finally, the Submit button should navigate to the rowinserted navigation case in the task flow. How would this functionality be accomplished?

- A. Bind the button's Action property to a backing bean that contains accessors for the button. In the getter for the button, return "rowinserted"
- B. Bind the button's Action property to a managed bean that calls the Commit operation and loginsert methods, and create a managed property with a value set to "rowinserted"
- C. Bind the button's Action Listener property to # {bindings. Commit. execute}, define a session-scoped managed bean that calls the loginsert method, and modify the loginsert method to return a String value of "rowinsertec"
- D. Bind the button's Action property to # {bindings. loginsert. execute} and define a session-scoped managed bean that calls the Commit operation and returns "rowinserted"
- E. Bind the button's Action property to a managed bean that calls the Commit operation and



---

logininsert methods via OperationBinding, and return "rowinserted"

F. Bind the button's Action Listener property to # {bindings. Commit. execute} && # {bindings, logininsert. execute) and set the Action property to "rowInserted # {bindings.Commit.execute}

**Answer: A**

**Explanation:**

### QUESTION NO: 48

Which three statements are true about managed bean usage within task flows?

- A. A managed bean can be used within a task flow router activity to evaluate a navigation case.
- B. You must explicitly instantiate a managed bean before using it.
- C. Managed beans are only available in bounded task flows.
- D. Common task flow actions can be placed in a managed bean within a task flow template.
- E. A task flow parameter can reference a managed bean.
- F. A managed bean always remains in scope while the task flow within which it is used is active.

**Answer: D,E,F**

Reference: <http://prasanna-adf.blogspot.com/2008/02/managed-bean.html>

### QUESTION NO: 49

What JDeveloper facility is being described in the paragraph below?

"It allows you to create multiple connections to one or more otherwise unrelated repositories so that you can browse their contents. It provides a Search tool to enable you to search all the defined repositories. If you find resources that your project may need to consume, you can drag those resources into your application as needed."

- A. Database Navigator
- B. ADF Library JAR file
- C. a version-control tool, such as Subversion
- D. resource catalog
- E. Application Resources accordion

**Answer: D**

Reference:

[http://download.oracle.com/docs/cd/E21764\\_01/webcenter.11111/e10148/jpsdg\\_catalog.htm](http://download.oracle.com/docs/cd/E21764_01/webcenter.11111/e10148/jpsdg_catalog.htm)



---

### QUESTION NO: 50

Identify five things that you can do with the declarative validation features of ADF Business Components?

- A. Define declarative validation rules at an attribute level and an entity level.
- B. Define whether a validation rule is either an error or a warning.
- C. Define whether the validation rule fires on the UI or business service tier.
- D. Define the order of execution of validation rules.
- E. Conditionally execute a validation rule based on an expression.
- F. Parameterize validation messages to reference ADF Business Components control hints, such as labels.

**Answer: A,B,C,D,E**

Reference: [http://docs.oracle.com/cd/E12839\\_01/web.1111/b31974/bcvalidation.htm](http://docs.oracle.com/cd/E12839_01/web.1111/b31974/bcvalidation.htm)

### QUESTION NO: 51

Which three statements are true about ADF Business Component declarative validation?

- A. An entity object attribute can have more than one validation rule.
- B. Declarative validation can also be defined on a view object to override the entity object level validation.
- C. For an entity object level validation rule, you can define which attributes will trigger the validation rule.
- D. If your application is to be deployed in three different languages, then a separate validation rule is required for each language to handle the different translated error messages.
- E. You can define a declarative validation rule to call a Java method.

**Answer: A,C,E**

Reference: [http://docs.oracle.com/cd/E16162\\_01/web.1112/e16182/bcrules.htm#sm0241](http://docs.oracle.com/cd/E16162_01/web.1112/e16182/bcrules.htm#sm0241)

### QUESTION NO: 52

During the development of an ADF BC application, you have created an entity object, CustomerEO, based on the CUSTOMERS table in the database. Further analysis of requirements highlights two transient attributes that need to be added to the CustomersEO entity object.



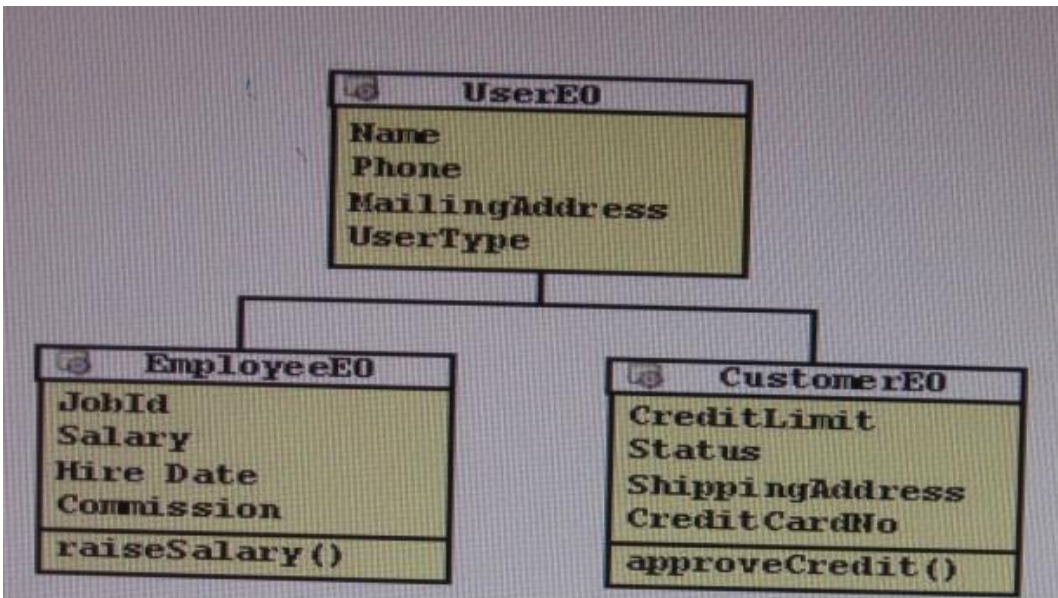
This means that you will have a mismatch between the entity object and the underlying table. What action should you take?

- A.** Ask the DBA to add the new entity object attributes as columns in the CUSTOMFR table and then run the Create Entity Object Wizard.
- B.** Ask the DBA to add the new entity object attributes as columns in the CUSTOMERS table and then synchronize the CustomersEO entity object and the CUSTOMERS table.
- C.** None. The entity object can contain attributes that do not exist as columns in the table.
- D.** Add the attributes to the entity object, and then synchronize the CustomersEO entity object and the CUSTOMERS table.

**Answer: D**

**Explanation:**

**QUESTION NO: 53**



Considering the inheritance depicted in the image above, how would you add functionality for reading and updating all of the appropriate attributes for each type of user?

- A.** Create a view object that defines a query as `SELECT User.NAME, Users.Phone, Users.MailingAddress, Users.UsersType, Employee.JobId, Employee.Salary, Employees.HireDate, Employee.Comission, Customers.CreditLimit, Costoners.Status, Customers.ShippingAddress, Customers.CreditCardNo FROM USERS users, USERS Employees, USERS Customers.`
- B.** Create a view object based on userEO, EmployeeEO, and CustomerEO. Ensure that the join type on EmployeeEO and CustomerEO are set to inner join, and select the reference checkbox.
- C.** Create a view object for UserEO and select EmployeeEO, and CustomerEO as subtypes. Select all attributes from UserEO, EmployeEo, and CustomerEO to include the view object.

---

**D.** Create three object, one for each user type. Create view links between USerVO. User type and Employee VO. UserType and between UserVO. UserType and CustomerVO.UserType, and define UserType as a discriminator in UserVO.

**E.** Create a view object for UserEO. Define UserType as a discriminator and supply a default value. Create appropriate subtypes EO for each VO, and supply a default value for UserType.

**Answer: B**

**Explanation:**

#### **QUESTION NO: 54**

Identify three roles and characteristics of application modules.

**A.** An application module can be "nested" but cannot be "shared."

**B.** An application module's data model contains an active view of the entity objects and view objects that are required for the task that the application module performs objects and view objects.

**C.** An application module can be reused in the business logic tiers of other applications.

**D.** An application module keeps track of the changes that affect data in the database.

**E.** All view objects in the application are eligible for inclusion in the application module's data.

**F.** An application module can contain multiple instances of the same view object.

**Answer: B,C,D**

Reference:

[http://download.oracle.com/docs/cd/A97337\\_01/ias102\\_otn/buslog.102/bc4j/Glossary.htm#application\\_module](http://download.oracle.com/docs/cd/A97337_01/ias102_otn/buslog.102/bc4j/Glossary.htm#application_module)

#### **QUESTION NO: 55**

You have a business component model to support departments (EO, VO, AM), and want to access it as a Web service. What should be the steps you'd need to perform to create a JavaServer Faces page?

**A.** 1. Create a service interface for an application module, 2: Select the entity objects and methods to include the service, 3: Deploy to WLS as EAR file, 4: connect to server containing WSDL, 5: create data control from XSD, 6: select operations to include in data control, 7: Develop UI from the Data Control as Normal.

**B.** 1. Create a service interface for an application module, 2: Select view objects and methods to include the service, 3: Deploy to WLS as EAR file, 4: connect to server containing WSDL, 5: create data control from XSD, 6: select operations to include in data control, 7: Develop UI from

---

the Data Control as Normal.

**C.** 1. Create a service interface for an application module, 2: Select the entity objects and methods to include the service, 3: Deploy to WLS as BS service interface, 4: connect to server containing WSDL, 5: create data control from XSD, 6: select operations to include in data control, 7: Develop UI from the Data Control as Normal.

**D.** 1. Create a service interface for an application module, 2: Select the view objects and methods to include the service, 3: Deploy to WLS as EAR file, 4: connect to server containing WSDL, 5: create data control from WSDL, 6: select operations to include in data control, 7: Develop UI from the Data Control as Normal.

**E.** 1. Create a service interface for an application module, 2: Select the entity objects and methods to include the service, 3: Deploy to WLS as BC service Interface, 4: connect to server containing WSDL, 5: create data control from XSD, 6: select operations to include in data control, 7: Develop UI from the Data Control as Normal.

**Answer: C**

**Explanation:**

#### **QUESTION NO: 56**

What memory scope would you use if it only needed to be available from the time a page is until the time a new page is rendered?

- A. Request
- B. View
- C. Page Flow
- D. Backing Bean
- E. Session

**Answer: D**

Reference: [http://docs.oracle.com/cd/E12839\\_01/web.1111/b31974/adf\\_lifecycle.htm](http://docs.oracle.com/cd/E12839_01/web.1111/b31974/adf_lifecycle.htm)

#### **QUESTION NO: 57**

After implementing ADF authentication in an application, what file contains the ADF authentication Servlet definition and mapping, defines a security constraint on authentication (to which you can then add further security constraints), and defines the login configuration?

- A. adfc-config.xml
- B. faces-config.xml
- C. jazn.data.xml
- D. web.xml

E. weblogic.xml

**Answer: D**

Reference:

[http://download.oracle.com/docs/cd/B31017\\_01/web.1013/b28967/adding\\_security003.htm](http://download.oracle.com/docs/cd/B31017_01/web.1013/b28967/adding_security003.htm)

**QUESTION NO: 58**

Your application has a page that displays information about employees in a company. Trace the sequence of the EmpId binding, starting from its role as an item on the page to its source Business component In the Model.

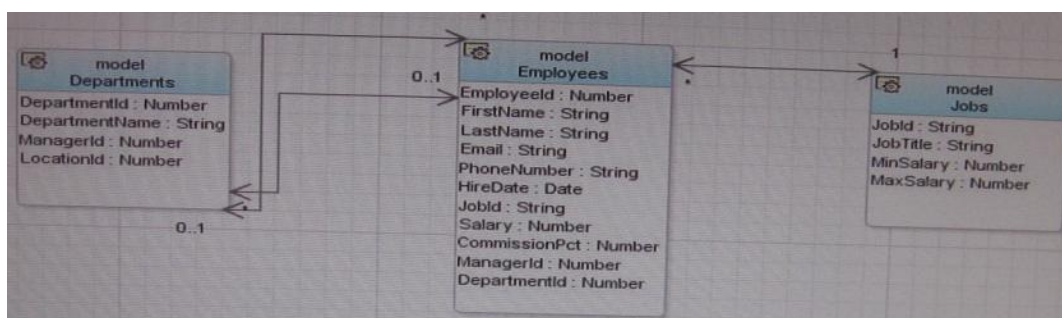
- A. EmpId item, EmpView iterator binding, EmpId attribute value, AppModuleDataControl data control EmpView view object, Emp entity object
- B. EmpId item, EmpId attribute value, AppModuleDataControl data control, EmpView iterator binding, EmpView view object, Emp entity object
- C. EmpId item, EmpId attribute value, EmpView iterator binding, AppModuleDataControl data control, EmpView view object, Emp entity object
- D. EmpId item, EmpView iterator binding, EmpView view object, EmpId attribute value, AppModuleDataControl data control, Emp entity object
- E. EmpId item, AppModuleDataControl data control, EmpId attribute value, EmpView iterator binding EmpView view object, Emp entity object

**Answer: B**

**Explanation:**

**QUESTION NO: 59**

Consider the business component entity objects included in the following diagram:



How would you create view objects to retrieve a form of jobs and table of Employees for each job?

- 
- A.** Create a read-only view object based on the query SELECT Employees. FIRST\_NAME, Employees . LAST\_NAME, Jobs. JOB TITLE from EMPLOYEES Employees, JOBS Jobs WHERE Employees, JOB\_ID=Jobs.JOB\_ID.
  - B.** Create a view object based on the Employees and Jobs entity objects and define the join type and association used to reference the Jobs entity.
  - C.** Create a default view object based on the Employees entity object and a default view object based on the Jobs entity object, and create a view link between the two view objects.
  - D.** Create a view object based on the query SELECT Employees.FIRST\_NAME. Employees .LAST\_NAME, Jobs, JOB TITLE from EMPLOYEES Employees, JOBS Jobs WHERE Employees.JOB\_TXTLE=Jobs.JOB\_TITLE.
  - E.** Create a default view object based on the Employees entity object and a default view object based on the Jobs entity object. In the Employees view object, create a view accessor that references the Jobs view object.

**Answer: A**

Reference: [http://docs.oracle.com/cd/E12839\\_01/web.1111/b31974/bcadvvo.htm](http://docs.oracle.com/cd/E12839_01/web.1111/b31974/bcadvvo.htm)

#### **QUESTION NO: 60**

What are the two main component properties that you need to set to enable PPR?

- A.** ValueChangeListener
- B.** Rendered
- C.** AttributeChangeListener
- D.** AutoSubmit
- E.** PartialTriggers
- F.** RefreshCondition

**Answer: D,E**

Reference: [http://docs.oracle.com/cd/E12839\\_01/web.1111/b31973/af\\_ppr.htm#BABHBJFH](http://docs.oracle.com/cd/E12839_01/web.1111/b31973/af_ppr.htm#BABHBJFH)

#### **QUESTION NO: 61**

You have an ADF Faces page that contains various input fields and a command button. The command button has the partial submit property set to true. For this page, when the button is clicked which two statements are true?

- A.** Only UI components whose values have been changed will be refreshed.
- B.** Only the UI panel In which the button exists will have its content refreshed.
- C.** The page will refresh all UI components that have the partialSubmit property set to true.

---

**D.** The page is submitted and only components, whose partialTriggers property references the button, will be refreshed.

**E.** The page is submitted, and any components that have the same binding executable as the button and have changeEventPolicy set to PPR, are refreshed.

**Answer: B,C**

Reference: [http://jdevadf.oracle.com/adf-richclient-demo/docs/tagdoc/af\\_commandButton.html](http://jdevadf.oracle.com/adf-richclient-demo/docs/tagdoc/af_commandButton.html)

## QUESTION NO: 62

Valid customer status codes for an application are contained in the StatusCode attribute of a CustomerStatus view object. In the Customers view object, the CustomerStatusCode attribute should be selected from a drop-down list. How would you create a list of value for CustomerStatusCode?

**A.** Create a view link for CustomerStatus. Define the list and display attributes and define that list attribute UI Hints.

**B.** Define the CustomerStatus list data source and list attribute. Define a display attribute and map the status code attribute to the CustomerStatusCode attribute.

**C.** Create a transient attribute in the Customers view object. Define the value of the customerstatusCode attribute using Groovy, and set the display type of the attribute to list.

**D.** Define the Customers list data source. Define the statuscode display attribute and the list return values, and set the value type for the statuscode attribute to list.

**E.** Create a view link for CustomerStatus. Define the WHERE clause for the Customers view object to include the corresponding list attributes from both view objects. Set the value type of the CustomerStatusCode attribute to list.

**Answer: A**

**Explanation:**

## QUESTION NO: 63

What type of executable would you use to link to detail collection for nested objects?

**A.** Iterator

**B.** AccessorIterator

**C.** VariableIterator

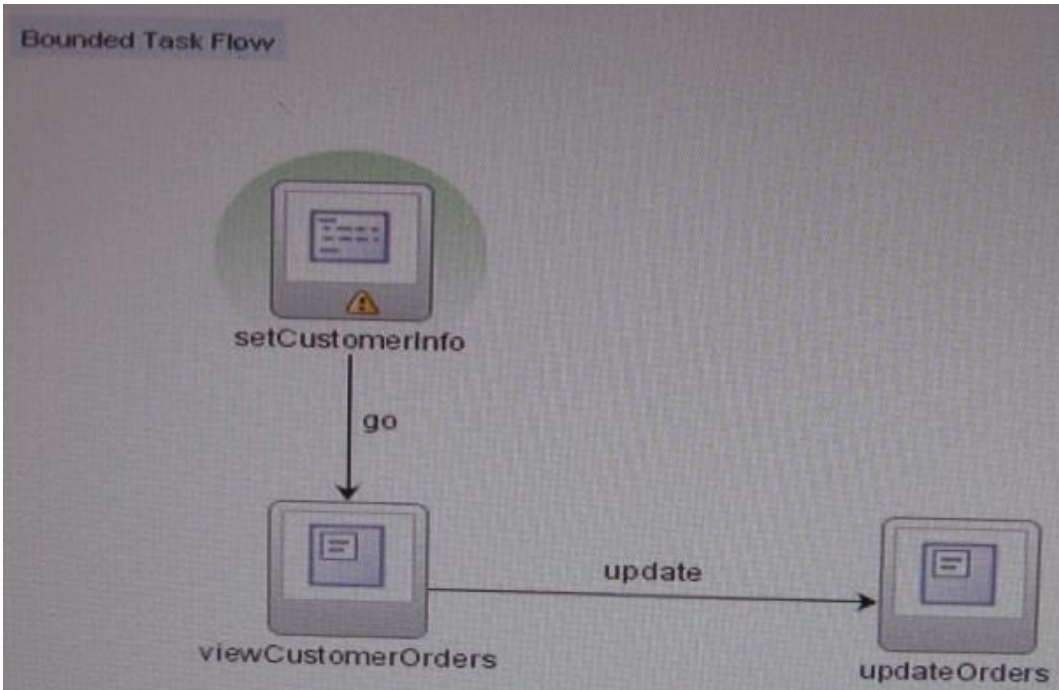
**D.** InvokeAction

**Answer: B**

Reference: [http://groundside.com/resources/DuncanMills/S298736\\_bindings.pdf](http://groundside.com/resources/DuncanMills/S298736_bindings.pdf) (page 16, please



**QUESTION NO: 64**



Consider this task flow. What will be the outcome of calling the task flow?

- A.** Because the default activity is not a view activity, the SetCustomerInfo method will be skipped and the ViewCustomerOrders view activity will be displayed in the region.
- B.** The SetCustomerInfo method is called, and the ViewCustomerOrders view activity will be displayed in the region if the SetCustomerInfo method returns a string of update.
- C.** The default activity will be called, and the ViewCustomerOrders method on the application module will be called.
- D.** The SetCustomerInfo method will be called, and the viewcustomerorders view activity will be displayed in the region.
- E.** The SetCustomerInfo method is called, and the UpdateOrders view activity will be displayed in the region if the setcustomerinfo method returns a string of update.
- F.** The SetCustomerInfo view activity will be called, and the go method will execute the ViewCustomerOrders method.

**Answer: F**

**Explanation:**

---

**QUESTION NO: 65**

How can you augment each entity object in an application so that a logging method is called after each create () method?

- A. Override the create () method of the AppModuleimp1 to implement the logging.
- B. Override the create () method of each EntityDefimp1 to implement the logging
- C. Set the jbo.loglevel and jbo.logoutput configuration parameters in the bc4j.xcfg file
- D. Override the createEntity () method of each Entityimp1 to implement the logging
- E. Override the create () method of a base Entityimp1 class and extend the class for each entity in the application

**Answer: B**

**Explanation:**

**QUESTION NO: 66**

Which three statements describe ADF Business Components?

- A. It is implemented entirely in XML; each component's run-time behavior is configured in an XML file.
- B. It comes with prebuilt code organized in the oracle.bc or oracie.bc Server package.
- C. Its source code is contained in a series of hierarchically organized packages.
- D. It implements the popular Java EE design patterns - all contained in the ADF Business Components Java EE Design Pattern Catalog.
- E. Labels and control hints are exclusively defined in Java classes.
- F. The physical caching of database records is implemented in view objects.
- G. It facilitates the reuse of business logic in numerous tasks in application development.

**Answer: A,C,D**

Reference: [http://docs.oracle.com/cd/E15523\\_01/web.1111/b31974/bcintro.htm](http://docs.oracle.com/cd/E15523_01/web.1111/b31974/bcintro.htm)

**QUESTION NO: 67**

What would you enclose an EL expression in so that it is evaluated immediately when a page is rendered?

- A. & {}
- B. # {}
- C. \$ {}



D. % {}

E. @ {}

**Answer: C**

Reference:

[http://books.zkoss.org/wiki/ZK\\_Developer's\\_Reference/UI\\_Composing/ZUML/EL\\_Expressions](http://books.zkoss.org/wiki/ZK_Developer's_Reference/UI_Composing/ZUML/EL_Expressions)

### QUESTION NO: 68

Your application contains a bounded task flow with four pages. The pages are all based on different application modules and the task flow has the transaction property set to "Always Begin New Transaction" and a commit operation is defined as the return activity. The user makes some changes on each of the pages but a commit failure occurs on the bindings in the third page.

Which of these scenarios describes the outcome of this situation?

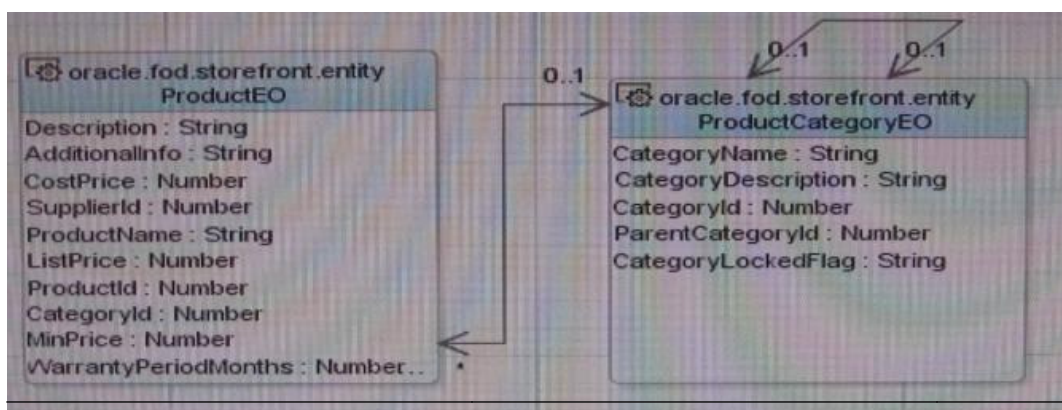
- A. None of the changes on any of the pages is committed all are rolled back.
- B. Pages one and two and four are committed; page three is not committed.
- C. The changes on the first two pages are committed; the changes on the last two pages are not committed.
- D. It depends on the value that has been set in the Transaction property on each application module.

**Answer: C**

**Explanation:**

### QUESTION NO: 69

The FOD schema includes two entity objects, ProductEO and ProductCategoryEO, related as shown in the screenshot. Examine the recursive relationship that ProductCategoryEO has with itself and choose the business rule that this relationship implements.



- 
- A.** A Product Category belongs to one or many (parent) Product Categories and a Product Category contains one or many (child) Product Categories.
  - B.** A Product Category may belong to a (parent) Product Category and may contain a (child) Product Category.
  - C.** A Product Category belongs to one and only one (parent) Product Category and contains at least one (child) Product Category.
  - D.** A Product Category belongs to one or many (parent) Product Categories and may contain Product Categories.
  - E.** A Product Category must belong to at least one (parent) Product Category and must contain and only one (child) Product Category.

**Answer: D**

**Explanation:**

### **QUESTION NO: 70**

Which managed property type supports a null value?

- A.** int
- B.** boolean
- C.** String
- D.** Object
- E.** Number

**Answer: C**

Reference: [http://docs.oracle.com/cd/E12839\\_01/web.1111/b31974/lists.htm](http://docs.oracle.com/cd/E12839_01/web.1111/b31974/lists.htm) (create a list bound to a fixed list of values, number 8, third paragraph)

### **QUESTION NO: 71**

What two statements are true about a "root" application module?

- A.** the lowest-level application module in a hierarchy of nested application modules
- B.** an application module that delegates a separate database connection to any modules that it contains
- C.** an application module that contains nested application modules
- D.** a nested application module
- E.** an application module that manages the transaction context for any nested application modules

**Answer: C,E**



---

Reference:

[http://docs.oracle.com/cd/B14099\\_19/web.1012/b14022/oracle/jbo/ApplicationModule.html](http://docs.oracle.com/cd/B14099_19/web.1012/b14022/oracle/jbo/ApplicationModule.html)

### QUESTION NO: 72

Identify two characteristics of an unbounded task flow.

- A. It cannot be called from another task flow.
- B. It may have multiple entry points.
- C. It has a well-defined boundary.
- D. It can be used as a region on a page.
- E. It can accept parameters and can return values.

**Answer: A,B**

Reference: [http://docs.oracle.com/cd/E12839\\_01/web.1111/b31974/taskflows.htm](http://docs.oracle.com/cd/E12839_01/web.1111/b31974/taskflows.htm)

### QUESTION NO: 73

Identify two ways to create a bounded task flow.

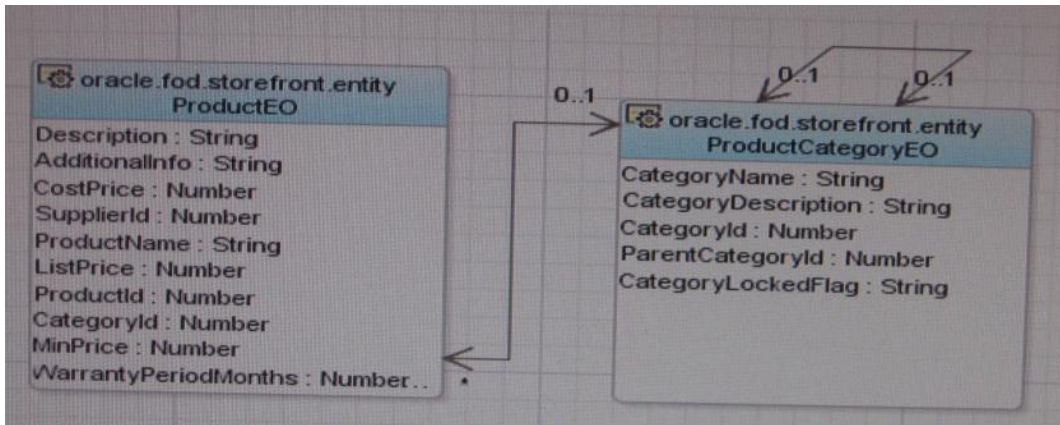
- A. by using the New Gallery
- B. by converting an unbounded task flow
- C. by adding task flow components to adfc-config.xml
- D. by extracting part of an existing task flow
- E. by dragging a task flow component from the Component Palette

**Answer: A,D**

Reference: [http://docs.oracle.com/cd/E12839\\_01/web.1111/b31974/taskflows.htm#BABICFBE](http://docs.oracle.com/cd/E12839_01/web.1111/b31974/taskflows.htm#BABICFBE)

### QUESTION NO: 74

The FOD schema includes two entity objects, ProductEO and ProductCategoryEO, related as shown in the screenshot. Examine the relationship between ProductEO and ProductCategoryEO and Choose the business rule that this relationship implements.



- A. A Product Category classifies zero or one Product belongs to one or many Product Categories.
- B. A Product Category classifies one or many Product belongs to one or many Product Categories.
- C. A Product Category classifies one and only one Product belongs to one or many Product Categories.
- D. A Product Category classifies one or more Product belongs to zero or one Product Categories.
- E. A Product Category classifies one and only one Product belongs to one and only one Product Categories

**Answer: C**

**Explanation:**

### QUESTION NO: 75

You have a page that shows employees, the department they work in, and their manager. When you assign an employee to a manager, you want to make sure the only managers you show are people who work in the same department as the employee. You can accomplish this task with a dependent list of values. In order to accomplish this task you need to create a view criteria on the employee's view. Which attribute from the employee's view should you use in view criteria?

- A. EmployeeId
- B. DepartmentId
- C. DepartmentName
- D. ManagerId

**Answer: B**

**Explanation:**

---

**QUESTION NO: 76**

How do application modules handle business components transactions?

- A. They provide a separate database transactions for each entity object.
- B. The delegate transaction management to Transaction object.
- C. They ensure that all the view objects in the application module are committed one by one in the logical sequence.
- D. They are eligible to manage a number of database connections concurrently.

**Answer: A**

Reference:

[http://download.oracle.com/docs/cd/B25016\\_08/doc/dl/web/B14362\\_02/chapter\\_bc4j.htm#i1024782](http://download.oracle.com/docs/cd/B25016_08/doc/dl/web/B14362_02/chapter_bc4j.htm#i1024782) (topic 3.7.2)

**QUESTION NO: 77**

You want to display a calculation of the total compensation for an employee. The total compensation is the salary plus the salary multiplied by any commission percentage. The salary and commission percentage are stored in the database, but the total compensation is not. A transient attribute has been defined in the employee entity object to display the total compensation. What would be the transient attribute's value if it was written in Groovy?

- A.  $(Salary \neq null ? Salary : 0) + (Salary * (CommissionPct \neq null ? CommissionPct : 0))$
- B.  $(Salary \neq null ? Salary : 0) +- (Salary * (CommissionPct : ))$
- C.  $(Salary \neq null : Salary * 0) + (Salary * (CommissionPct \neq null ? CommissionPct : 0))$
- D.  $(Salary \neq null ? Salary : 0) + (Salary * (CommissionPct == null ? CommissionPct : 0))$
- E.  $(Salary \neq null ? Salary : 0) + (Salary * (CommissionPct \neq null ? CommissionPct : 0))$

**Answer: A**

Reference: [http://st-curriculum.oracle.com/obe/jdev/obe11jdev/ps1/adfbc\\_new\\_features/adfbc.html](http://st-curriculum.oracle.com/obe/jdev/obe11jdev/ps1/adfbc_new_features/adfbc.html) (topic: creating calculated attributes; second point)

**QUESTION NO: 78**

For a newly added item, you want to ensure that unit price for that order item is not less than the minimum price as defined in the ProductInformation entity object. You must also ensure that the validation checks for any changes to the ProductInformation entity object that are not yet committed in the current transaction.

---

Which ADF Business Component declarative validation on the UnitPrice attribute would achieve this functionality?

- A. a list validation where unitprice is in the query result: SELECT min\_price from Product\_information
- B. a list validation where unitprice is in ProductInformationViewObject (MinPrice)
- C. a compare validation where unitprice product\_information is greater than the query result SELECT min\_price
- D. a compare validation where unitprice ProductInformation.MinPrice is greater than the expression
- E. a key exists validation with target entity object ProductInformation .MinPric

**Answer: D**

**Explanation:**

#### QUESTION NO: 79

You have a page containing all the Department items. It also includes a button to save the changes. What is the correct expression language value you should have for the Action Listener Property?

- A. #{!bindings.Commit.execute}
- B. # {bindings. Commit.current Row}
- C. #{bindings.Commit.execute}
- D. #{bindings- Save.execute}
- E. # {bindings. Comnit. immediate}

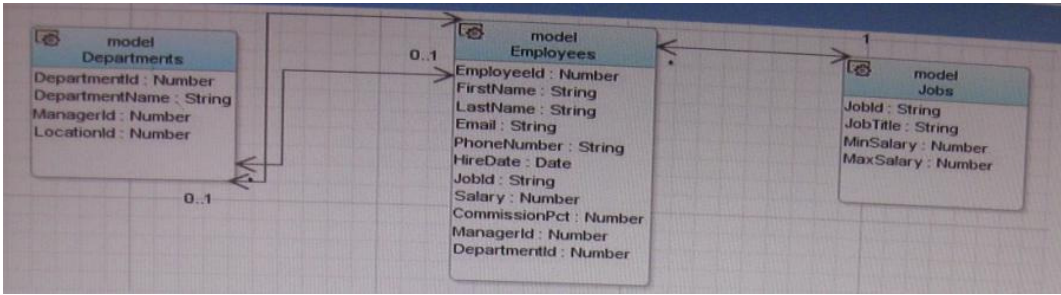
**Answer: C**

Reference:

[http://books.google.com.pk/books?id=TyLqw6i6BtYC&pg=PA432&lpg=PA432&dq=action+listener+property+%23%7Bbindings.Commit.execute%7D&source=bl&ots=PEDtbG-uOm&sig=k38P4oDp1oiQzDYKFIF7nczAE1A&hl=en&ei=GmjBTtn5GsPKsgaCw8CeAw&sa=X&oi=book\\_result&ct=result&resnum=5&ved=0CDgQ6AEwBA#v=onepage&q&f=false](http://books.google.com.pk/books?id=TyLqw6i6BtYC&pg=PA432&lpg=PA432&dq=action+listener+property+%23%7Bbindings.Commit.execute%7D&source=bl&ots=PEDtbG-uOm&sig=k38P4oDp1oiQzDYKFIF7nczAE1A&hl=en&ei=GmjBTtn5GsPKsgaCw8CeAw&sa=X&oi=book_result&ct=result&resnum=5&ved=0CDgQ6AEwBA#v=onepage&q&f=false)

#### QUESTION NO: 80

Consider the business components entity objects included in the following diagram:



How would you create view objects to retrieve all information on Jobs and Employees in one table?

- A. Create a read-only view object based on the query `SELECT Employees. FIRST NAME, Employees . LAST__NAME, Jobs, JOB_TITLE from EMPLOYEES Employees, JOBS Jobs WHERE Employees. JOB_ID=Jobs. JOB_ID.`
- B. Create a view object based on the Employees and Jobs entity objects and define the join type and association used to reference the Jobs entity.
- C. Create a default view object based on the Employees entity object and a default view object based on the Jobs entity object, and create a view link between the two view objects.
- D. Create a view object based on the query `FIRST NAME, Employees . LAST__NAME, Jobs, JOB_TITLE from EMPLOYEES Employees, JOBS Jobs WHERE Employees. JOB_ID=Jobs. JOB_Title.`
- E. Create a default view object based on the Employees entity object and a default based on the Jobs entity object. In the Employees view object, create a view references the Jobs view object.

**Answer: B**

**Explanation:**

**QUESTION NO: 81**

When a page is rendered, the binding filter asks the binding context to load the file containing parameters, executables, and bindings. Name this file.

- A. DataBinding.cpx
- B. bc4j.xcfg
- C. adfm.xml
- D. .jspx

**Answer: C**

**Explanation:** <http://adfhowto.blogspot.com/2011/04/adf-metadata-files.html> (ordered list #5)

---

**QUESTION NO: 82**

Which three AM laces components fire a selectionEvent?

- A. inputListOfValues
- B. tree
- C. All input and select components
- D. inputComboboxListOfValues
- E. treeTable
- F. table
- G. All command components

**Answer: B,D,E**

**Explanation:**

**QUESTION NO: 83**

An application has an address form that allows internal users to enter shipping addresses for provisioning, as well as allows external users to enter billing address for placing orders. How can this form be implemented to promote reuse?

- A. As a page tempate that multiple Pages can be based upon
- B. as a page fragment that can be used for multiple task flows
- C. as a ospx page containing a form with input components
- D. ospx page contained within a module
- E. as a page fragment that contains an af:document tag

**Answer: B**

**Explanation:**

**QUESTION NO: 84**

For an employee view object, you have defined a view criteria to show only U.S employees, you already have an ADF Faces table displaying data from employees view object. How would you design the page to display a query panel on the page that will allow the end user to select view criteria and filter the existing Employees table on the page?

- A. Drag the view criteria as a query panel.



- 
- B.** Drag the view criteria to the existing table and select query panel with table.
  - C.** Drag the view criteria as a query panel, and then set the ID property of the query panel to reference the table.
  - D.** Drag the view criteria as a query panel, and then set the ResultcomponentId property of the query component to reference the table.
  - E.** Drag the view criteria as a query panel, and then set the Model property of the query component to reference the table binding.
  - F.** Drag the view criteria as a query panel, and then set the value property of the query component to reference the table binding.

**Answer: D**

Reference:

[http://docs.oracle.com/cd/E12839\\_01/web.1111/b31974/web\\_search\\_bc.htm#CIHIJFCH](http://docs.oracle.com/cd/E12839_01/web.1111/b31974/web_search_bc.htm#CIHIJFCH) (topic 26.2)

### **QUESTION NO: 85**

How is the view activities in a bounded task flow used when dropped onto a page?

- A.** as page fragments that are rendered within a region
- B.** as .jspx pages that contain task flow calls
- C.** as page fragments that contain an f:view tag
- D.** as .jsff pages that are rendered within a module
- E.** as a .jspx page that is defined as a template

**Answer: A**

Reference: [http://docs.oracle.com/cd/E12839\\_01/web.1111/b31974/taskflows\\_regions.htm](http://docs.oracle.com/cd/E12839_01/web.1111/b31974/taskflows_regions.htm) (topic 17.1, second paragraph)

### **QUESTION NO: 86**

A view link defines a basic master-detail relationship between two view objects. Which three masters detail hierarchy's can you achieve by creating more view links?

- A.** multilevel master-detail-detail
- B.** multilevel detail-master-master
- C.** detail with multiple masters
- D.** master with multiple (peer) details

**Answer: A,C,D**

---

Reference: [http://docs.oracle.com/cd/E12839\\_01/web.1111/b31974/bcquerying.htm](http://docs.oracle.com/cd/E12839_01/web.1111/b31974/bcquerying.htm) (topic 5.6.3; in a note)

### QUESTION NO: 87

What three statements are correct about task flow control flows?

- A. A control flow would typically be initiated from a button or link that is being clicked.
- B. A view activity can be the source for many control flow rules.
- C. A Control flow can exist between a view activity and a method call.
- D. The definition of control flows for a page are stored in the page backing bean.
- E. The name of a control flow must match the name of the view activity to which it navigates.

**Answer: A,C,E**

**Explanation:**

### QUESTION NO: 88

What type of reusable component is being described here?

“They define reusable skeletons which are available to be extended, and therefore, cannot be run on their own. They can be based on another reusable component of same type. To reuse mechanisms are provided: by copy and by reference”

- A. Application modules
- B. Page templates
- C. Task flow templates
- D. Task flows
- E. Declarative components

**Answer: C**

Reference: <http://www.oracle.com/technetwork/developer-tools/adf/learnmore/oracle-adf-11g-primer-154277.pdf> (page 9)